

THE ABERFELDY ANNOUNCER

The newsletter from Aberfeldy Big Local



In this issue:

- Introduction from new ABL Manager
- What we've been up to
- What's On at ABL - half term and winter
- New ABL Local Plan
- How to get involved

Aberfeldy Big Local Updates

Since the last edition of the Aberfeldy Announcer, the team have welcomed a new ABL manager and have delivered a successful Jubilee event and summer programme.

The ABL Board and staff team have spent the last few months writing a new Local Plan to set the vision, priorities and budget for ABL's work up until 2026.

Following consultation with residents, we have started our planning for activities in the next few months. We welcome ideas and suggestions from the community on how we can support these.

Read on to find out what's coming up and how to get involved!

Follow us on social media or visit our website:



Aberfeldy Big Local



@AberfeldyBL



@AberfeldyBL



www.aberfeldybiglocal.com

 **ABERFELDY**
big local

Hello from Nick

ABL are pleased to welcome and introduce our new manager, Nick Mallinger. Nick brings a wealth of experience in community development, arts & heritage, and education. We're excited to bring on board his community-led and collaborative approach as we build communities and influence placemaking in Aberfeldy. Nick joins at a very exciting time as we shape programming for our new Local Plan. He's eager to work with residents and partners to celebrate the diversity of Aberfeldy and make it an even better place to live.



What we've been up to



SEWING WORKSHOPS

Rasheda, one of our local practitioners, ran 16 weeks of sewing workshops at ABL. Rasheda taught local women how to make made-to-measure clothing. These sessions were very popular as residents got together and developed their sewing skills, this was also a great opportunity for the residents to meet and socialise, overall we welcomed more than 20 local women.

HEALTH & WELLBEING

Residents have previously expressed that they wanted workshops on managing their health and wellbeing. Responding to these requests, ABL arranged a series of workshops on Diabetes and Cancer awareness which was delivered by Community Links. Residents found the workshops valuable so ABL will be delivering more workshops around various health topics. Please do pop in and let us know if there is anything specific that you would like to see more of.



Platinum Jubilee Event

On Sunday 5th June, Aberfeldy Big Local brought 400 local residents together to celebrate Her Majesty Queen Elizabeth II's Platinum Jubilee. There were activities for all ages, with Royal Dress Up, community stalls, a Bake Off competition, a raffle and much more! With food and afternoon tea provided by local cafés, we celebrated in style and had a fabulous day!



Summer Activities



Mudchute Park & Farm ran a range of activities for children & families on Leven Road for 4 weeks. These included sporting and creative activities such as crazy golf, beat the goalie, badge making and personalised friendship bracelets. The Mudchute Farm animals also made an appearance and local children had the opportunity to pet and hold them.

The Making for Change team and London College of Fashion's students delivered a range of activities for children & young people, from making bum bags to woven keyrings. They used waste fabrics to make their products and the young people learned how to upcycle and reuse materials to create fashion pieces.



Local resident Sara ran a diverse range of workshops for children aged 5 to 16 years old. Through these workshops, Sara offered children the opportunity to explore different creative and craft skills. Some of Sara's sessions included cake decorating, weaving baskets, making personalised key rings and even designing your own T-shirts! The feedback was great, children really enjoyed these creative sessions as they found it calming and therapeutic and have told us they would like to see more of these activities.

Summer of Wellbeing Festival

Aberfeldy Big Local took part in WellOne's Summer of Wellbeing festival on Thursday 22nd September. The team ran an arts and wellbeing activity encouraging residents to think about what they like about the area and what makes Aberfeldy home.

We also spoke to residents of all ages about what activities the community needs and that they would like to take part in and how Big Local can support this.



What's On!

VISIT MUDCHUTE PARK AND FARM WITH ABERFELDY BIG LOCAL

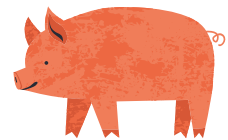
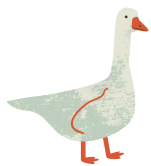
Aberfeldy Big Local will be running a trip to Mudchute Park and Farm for Aberfeldy residents of all ages. Residents can take part in an exclusive tour of the farm, an animal handling activity and themed arts and crafts.

WHEN: Monday 24th October

TIME: 10:45 - 15:30

WHERE: Meet at 39 Aberfeldy Street, we will take the DLR to Mudchute Park and Farm and return to Aberfeldy in the afternoon.

Limited places available. Pay a £1 refundable deposit to reserve your place. Contact Veronica on [07436626061](tel:07436626061) for more information and to book your place.



Diwali Celebration

*Come and celebrate Diwali with
Aberfeldy Big Local*



We will have drop in activities for both children and adults led by local practitioners to learn about and celebrate Diwali traditions.

Everyone is welcome!

When: Tuesday 25th October 4-7pm

Where: 39 & 48 Aberfeldy Street, E14 ONU

Mini Royal Realness Exhibition

Following the Aberfeldy Big Local's community event celebrating Her Majesty Queen Elizabeth II's Platinum Jubilee earlier in the year, London College of Fashion presents a photographic exhibition from the project Mini Royal Realness on display at Aberfeldy Big Local, at 39 Aberfeldy Street.

The exhibition launched on Thursday 13th October with an event for residents and will be open until Thursday 10th November.

Opening hours:

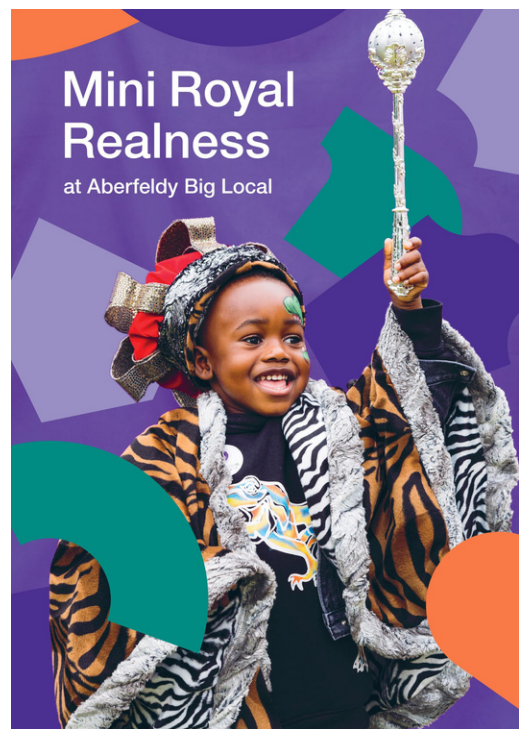
Monday, Tuesday & Thursday: 9am-6pm

Wednesday: 9am-12.30pm

Join textile designer Jasmine Fontiverio-Hylton in a three-week programme exploring and celebrating Aberfeldy street.

- Tuesday 18th October 1-3pm
- Tuesday 1st November 1-3pm
- Tuesday 8th November 1-3pm

Contact l.mckirdy@fashion.arts.ac.uk to sign up for the workshops.



Under-5's

Tiny Tots

Drop into the Aberfeldy baby and toddler group!

When: Wednesdays 10am-12pm (term time only)

Where: Langley Hall, St Nicholas Church E14 OPT

£1 for one adult and child, 30p per additional child.

Contact laurab@parishofpoplar.org for more information.



If you have any other ideas about under-5 activities you would like to see in Aberfeldy, please speak to ABL staff.

Youth Call Out

Are you aged 12 - 25? Do you have ideas about what should be on offer for young people in Aberfeldy?

We want to hear from you!

The ABL team have been asking young people what is important to them and how ABL can support these ideas. There are lots of ways for young people to get involved in ABL's work, by having your voice heard, influencing decisions or leading on projects!

If this is something that interests you, or you want to find out more, drop into 39 Aberfeldy Street or contact Veronica on **07436 626 061**.

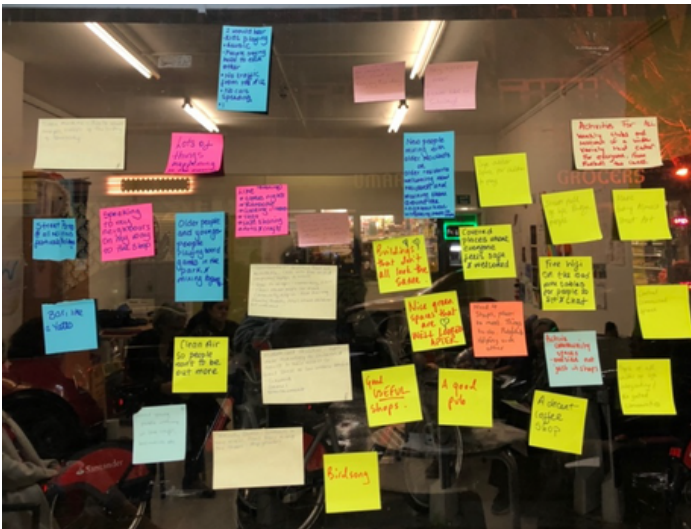
New ABL Local Plan

What is Aberfeldy Big Local?

Aberfeldy Big Local (ABL) has been in existence since 2013. Part of the national Big Local programme, ABL is a group of local residents, known as the partnership board, working to invest £1 million of Lottery funding into Aberfeldy.

Writing the new Local Plan

Beginning in March 2022, ABL set out to create a new plan entailing the vision, aims and budget for the remainder of the project up until 2026.



To better understand the needs of residents and inform the new plan, ABL commissioned a community research survey from Toynbee Hall. Community researchers met and spoke to residents at various events over the spring.

Our Mission

We aim to use the Big Local funding to invest in our community, backing local people to lead on exciting ways to make Aberfeldy a better place to live.

The area is going through big changes and we want to make sure that everyone in Aberfeldy can benefit from these. We want regeneration to bring real wins for the community rather than passing people by. We believe the only way we can achieve this is by working together as a community to share ideas, skills and talents and take advantage of opportunities that all of us can gain from.

New Local Plan

The new plan describes ABL's priorities for the next three years, which continues its community-led legacy to support **PEOPLE, PLACE & POWER**.

PEOPLE

To build a strong and confident community, we will invest in our **PEOPLE** to become active in local life, taking the lead on activities and events that bring people together and build community spirit. We will invest in our young people to have a brighter future.

PLACE

A community needs vibrant, authentic and welcoming **PLACES** for people to meet and mix. We will conserve and develop the places where we mix with our neighbours, build new relationships and develop a sense of belonging to Aberfeldy.

POWER

We will build the **POWER** of Aberfeldy residents to influence the changes taking place in the area by connecting with local organisations, supporting them to build their capacity and developing the community's voice to be heard on an equal footing with developers, the local council and other agencies.



Among the many strands of work that will support Aberfeldy residents, we will be re-launching our popular Community Chest grants next year, our small pots of funding (up to £500) to support activities and events that develop local talent and build communities.

We will ask residents to come forward with their ideas on how they can do this. In the meantime, residents should start thinking of ideas of projects they would like to run and how they meet the Big Local priorities.

Contact **Veronica** on **07436626061** or email **hello@aberfeldybiglocal.com** to be added to our mailing list and be notified of when Community Chest grants open up!



Sheila's Brew over the Winter

This winter is going to be challenging for many of us with the rise in living costs and energy bills. Aberfeldy Big Local will be open for the usual Tea Room facilities **Monday to Wednesday between 9.30am - 12.30pm.**

The space will be warm and residents are welcome to pop in for a hot drink and a chat.

If you have any suggestions on how the ABL team can support you or anyone that you know that may be struggling through this winter, please do let us know as we welcome your suggestions, comments and feedback.

If you are feeling worried or isolated there are many organisations that will be able to support you, pop into **39 Aberfeldy street** for more information.



How to get involved?

How does Big Local work?

A partnership board of between 8 and 16 people who live on Aberfeldy meet once a month to discuss the priorities in the Local Plan and make decisions on how to deliver the aims that benefit the whole community. The partnership board and the local knowledge and information they have are essential to running the project.

Are you interested in community organising, want to build on what makes your community a good place and cooperate with others to identify what could be improved? Join the ABL Board now!

Drop in to 39 Aberfeldy Street to speak to one of the team, or email hello@aberfeldybiglocal.com or call **07436626061** to find out more.

You can also register your interest in volunteering in the community on projects you are interested in.

For more information on ABL, visit our website by scanning our QR code:



To receive regular updates about ABL activities and opportunities, join our mailing list by scanning our QR code:

